

Reminders

for using your
SmartJect®
autoinjector for
SIMPONI® (golimumab)

If your doctor decides you or a caregiver can inject SIMPONI® at home, you should receive training on the right way to prepare and inject.

DO NOT try to inject SIMPONI® until you have been shown the right way by your doctor or nurse.

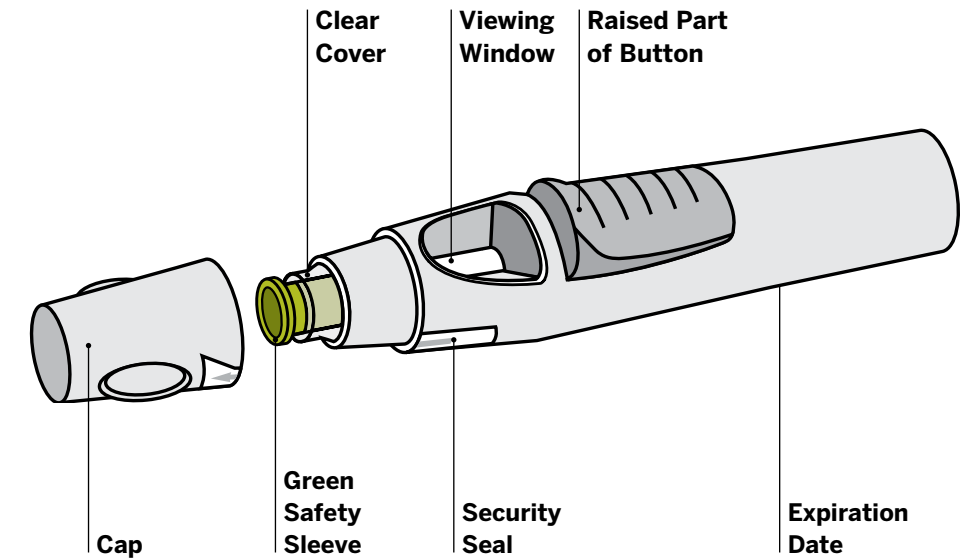
It is important to read, understand, and follow the **Instructions for Use** that come with your SIMPONI® medication. This reminder guide is not intended to replace those instructions.

Please read the [Medication Guide for SIMPONI®](#) and discuss any questions you may have with your doctor.



SmartJect® at-a-glance

- DO NOT** remove the cap until you are ready to inject (Step 3). Inject SIMPONI® within 5 minutes of removing the cap.
- DO NOT** press the button until you are ready to inject, and SmartJect® is pushed firmly against your skin.
- DO NOT** shake SmartJect® at any time.



Need more help?

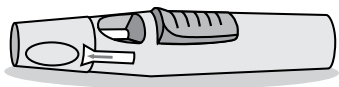
Please watch the SmartJect® autoinjector demonstration video at [Simpsoni.com/Injection](https://www.simpsoni.com/injection).

For additional questions about the injection process, please call Janssen Nurse Support at 877-MY SIMPONI (877-697-4676).

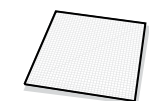
Step 1

Gather and inspect your supplies

Gather supplies:



1 SmartJect® autoinjector
(from refrigerator)



Alcohol swab



Cotton ball or gauze



Sharps container
(for disposing used SmartJect®)

Need a disposal container?

Call SimpsoniOne® Support at 877-MY SIMPONI (877-697-4676) or visit [Simpsoni.com/SafeReturns](https://www.simpsoni.com/SafeReturns) to request your Safe Returns® disposal container.

Prepare SmartJect®

After removing SmartJect® from the refrigerator, take it out of the carton.

Allow SmartJect® to sit at room temperature for **30 minutes** to ensure proper injection.

DO NOT warm SmartJect® any other way.

Keep it out of reach of children.

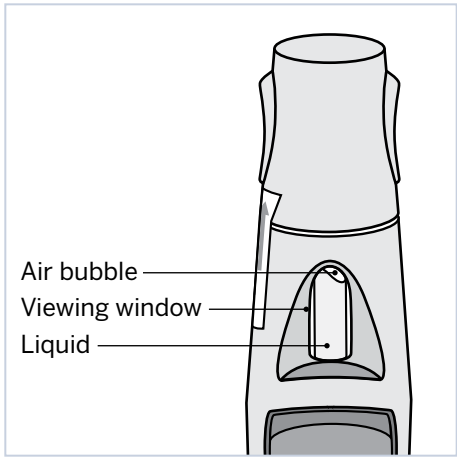


Check expiration date

DO NOT use if the expiration date (“EXP”) on SmartJect® has passed.

Check security seal

DO NOT use SmartJect® if the security seal around the cap is broken.



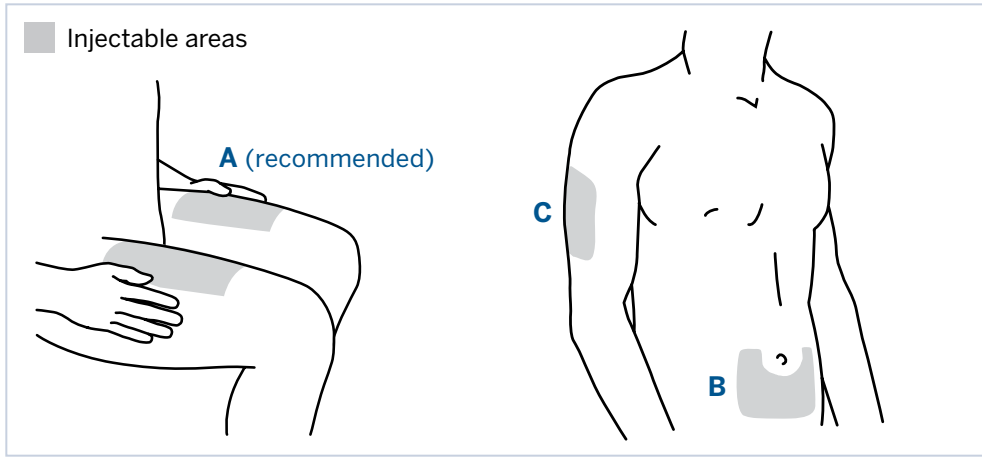
Check liquid

Look at the viewing window to check the liquid. It should be clear to slightly yellow and may have tiny white or clear particles.

DO NOT inject SIMPONI® if the liquid is cloudy or discolored, or has large particles.

Step 2

Choose and prepare your injection site



Choose injection site:

- A. Front of thighs (recommended)
 - B. Lower abdomen (avoid the 2 inch area around your navel)
 - C. Back of upper arms (if a caregiver is giving you the injection)
- Choose a different injection site for each injection.

DO NOT inject into skin that is tender, bruised, red, scaly or hard.

Wash hands

Wash your hands well with soap and warm water.

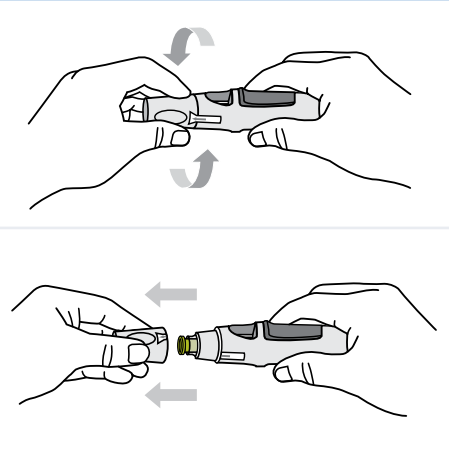
Clean injection site

Wipe your chosen injection site with an alcohol swab and allow it to dry.

DO NOT touch, fan or blow on the injection site after you have cleaned it.

Step 3

Inject using SmartJect® (read carefully)

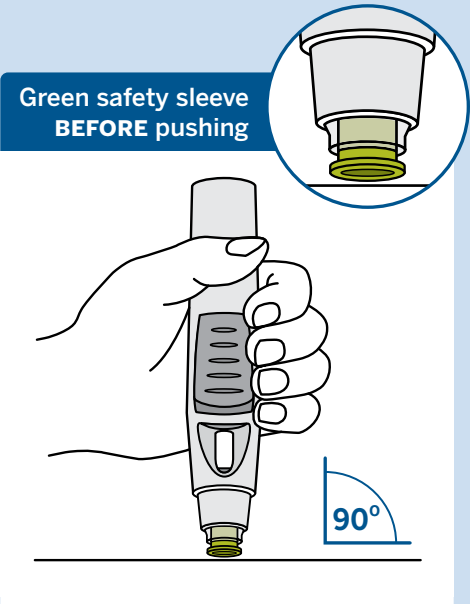


Remove cap

Inject within 5 minutes of removing the cap.

Twist to break the security seal, then pull to remove the cap. Dispose of the cap in the trash.

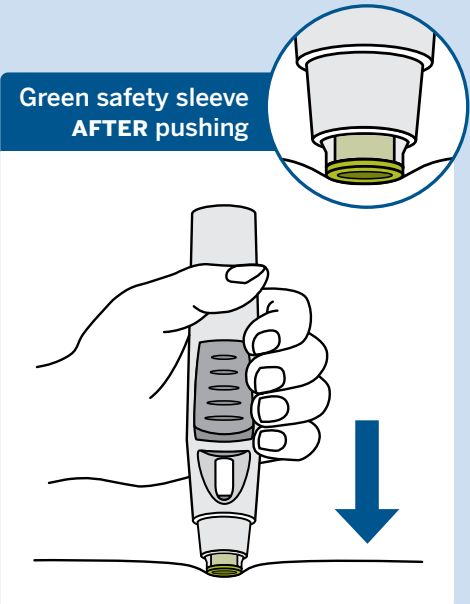
DO NOT put the cap back on.



Position

Position SmartJect® straight onto your skin (90 degrees).

DO NOT touch or press the button while positioning.



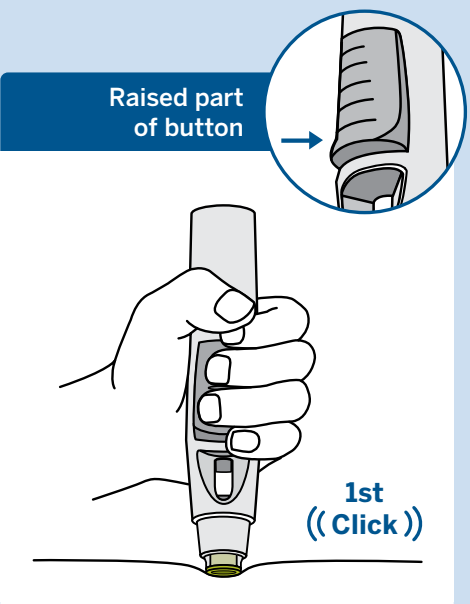
Push firmly

Push SmartJect® firmly against your skin. The safety sleeve will slide into the clear cover.

DO NOT touch or press the button while pushing firmly against your skin.

What's the green safety sleeve?

The safety sleeve prevents unintended injections. The button cannot be pressed until you push firmly enough to slide the safety sleeve into the clear cover.

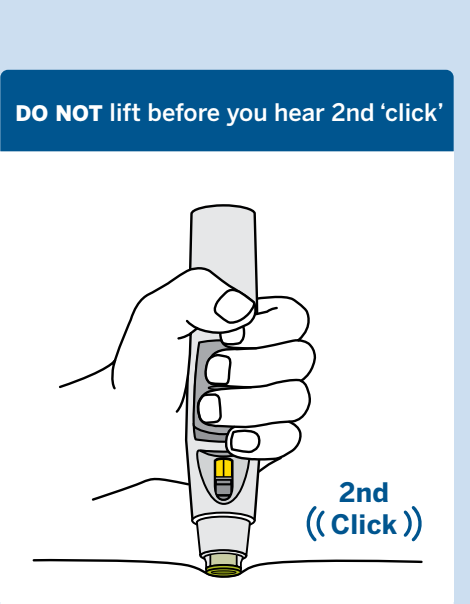


Press button

Keep holding SmartJect® firmly against your skin, then press the raised part of the button to start your injection.

You will hear a loud first 'click.' Don't be alarmed.

DO NOT lift up yet, wait for the **second 'click.'** to complete the injection.



Hold and listen

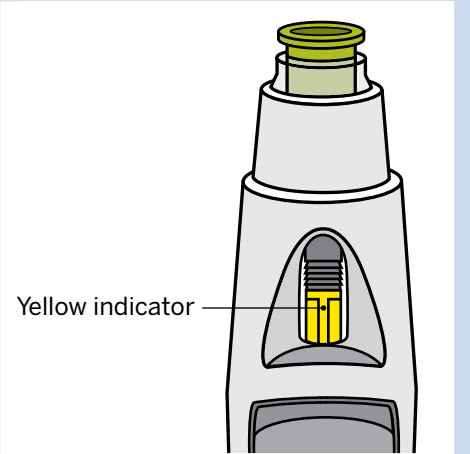
Keep holding SmartJect® firmly against your skin until you hear the **second 'click,'** or count to 15 after pressing the button.

Then lift from your skin.

DO NOT lift before you hear the **second 'click.'**

Step 4

After your injection



Confirm

After you have lifted SmartJect® from your skin, look for the yellow indicator in the viewing window to confirm that SmartJect® worked the right way.

Don't see the yellow indicator? Call 800-JANSSEN (800-526-7736) for help.

DO NOT administer a second dose without speaking to your doctor.



Dispose

Dispose of your used SmartJect® in an approved sharps container.

DO NOT throw SmartJect® away in your household trash.

Check injection site

A small amount of blood or liquid is normal. Press with a cotton ball or gauze.

DO NOT rub.

Having difficulty pressing the button to inject?

- Make sure you removed and disposed of the cap. **DO NOT** put the cap back on.
- Make sure you are positioning SmartJect® straight onto your skin.
- Make sure you are not pressing the button while you position and push SmartJect® firmly against your skin.
- Try pushing SmartJect® against your skin more firmly.
- Try using two hands to inject. Use your other hand to steady SmartJect®.
- Make sure you are pressing the raised part of the button.
- Try pressing the button with a little more force.
- Make sure your injection site is flat. If you are pinching your skin to inject, try pinching less skin.
- Try a different injection site.

Please read the [Medication Guide](#) and [Instructions for Use](#) for SIMPONI® (golimumab). Talk to your doctor if you have any questions about the right way to inject.

For additional questions or assistance, or to share your feedback, call 800-JANSSEN (800-526-7736).