

READ THIS ENTIRE SHEET BEFORE USING THE SINGLE DOSE SMARTJECT® AUTOINJECTOR.

The single dose SmartJect® autoinjector for SIMPONI®

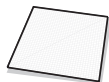
If your doctor decides that you or a caregiver may be able to give your injections of SIMPONI® (golimumab) at home, you should receive training on the right way to prepare and inject SIMPONI®. **Do not** try to inject SIMPONI® yourself until you have been shown the right way to give the injections by your doctor or nurse. Call your doctor if you or your caregiver have any questions about the right way to inject SIMPONI®.

Important things to note about your single dose SmartJect® autoinjector for SIMPONI®:

• Do not:

- Shake the SmartJect® autoinjector at any time.
- Remove the SmartJect® autoinjector cap until you get to that step.
- You must continue to hold the SmartJect® autoinjector firmly against the skin until you hear 2 clicks. The first click is a loud click. **Do not** be alarmed. This click indicates the start of the injection, and it is important that you **do not** lift or move the SmartJect® autoinjector at this time. If you pull the SmartJect® autoinjector away from the skin before your injection is complete, you may not get your full dose of medicine. The second click indicates the end of the injection. **Do not** lift the SmartJect® autoinjector from the skin until after you have heard both clicks.
- The SmartJect® autoinjector will not work unless the safety sleeve is fully depressed against the skin.
- **These instructions are not meant to replace the *Instructions for Use* that come with your single dose SmartJect® autoinjector. When it is time to take your medication, please thoroughly read the *Instructions for Use* and the *Medication Guide* enclosed in the carton before use.**

STEP 1: GATHER AND INSPECT THE SUPPLIES FOR YOUR INJECTION



1 alcohol swab



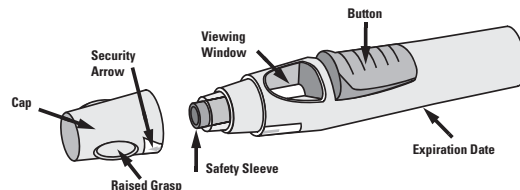
1 cotton ball or gauze



1 SIMPONI® single dose SmartJect® autoinjector



sharps container for autoinjector disposal

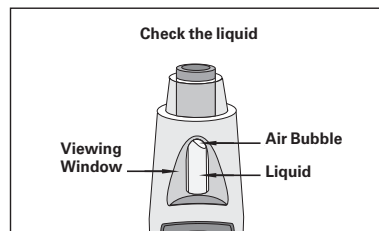


1. Check Expiration Date on SmartJect® autoinjector label: If it has passed, **do not** use the SmartJect® autoinjector. Call your doctor or pharmacist, or call 1-800-JANSSEN (1-800-526-7736) for help.

2. Check Security Seal on SmartJect® autoinjector: If it is broken, **do not** use the SmartJect® autoinjector.

3. Wait 30 minutes: To ensure proper injection, allow the SmartJect® autoinjector to sit at room temperature outside the carton for 30 minutes and out of reach of children. **Do not** warm the SmartJect® autoinjector in any other way.

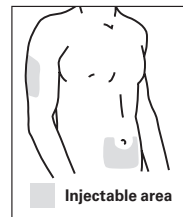
4. Check the liquid through the viewing window of the SmartJect® autoinjector: Make sure that the liquid is clear and colorless to slightly yellow in color. You may see a small amount of tiny particles that are white, or that you can see through. **Do not inject the liquid if it is cloudy or discolored, or has large particles in it.** You may also notice an air bubble. This is normal.



STEP 2: CHOOSE AND PREPARE THE INJECTION SITE

1. Choose the injection site: The recommended injection site is the front of your middle thighs. You can also use the lower part of the abdomen below the navel/belly button, except for the two-inch area directly around the navel. If a caregiver is giving you the injection, the outer area of the upper arms may also be used. **Do not** inject into areas where the skin is tender, bruised, red, scaly, or hard. Avoid areas with scars or stretch marks.

2. Prepare the injection site: Wash your hands well with soap and warm water. Wipe the injection site with an alcohol swab. **Do not** touch this area again before giving the injection. Allow the skin to dry before injecting. **Do not** fan or blow on the clean area.



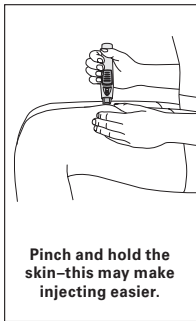
READ THIS ENTIRE SHEET BEFORE USING THE SINGLE DOSE SMARTJECT® AUTOINJECTOR.

STEP 3: INJECTING SIMPONI® USING THE SINGLE DOSE SMARTJECT® AUTOINJECTOR

1. Remove the Cap - Do not remove the cap until you are ready to inject

SIMPONI®. Inject SIMPONI® within 5 minutes after the cap has been removed. When you are ready to inject, twist the cap slightly to break the security seal. Pull the cap off and throw it in the trash right away. **DO NOT** replace the cap, as it could damage the needle.

2. Hold the SmartJect® autoinjector comfortably in your hand. Do not press the button.



3. Push the open end of the SmartJect® autoinjector firmly against your skin at a 90-degree angle.

Use your free hand to pinch and hold the skin at the injection site. This can help you create a firmer, more stable surface for your injection, and may make injecting easier. You will not be able to push the button unless the SmartJect® autoinjector is pressed **firmly** against your skin.

4. Press the front raised part of the button to inject -

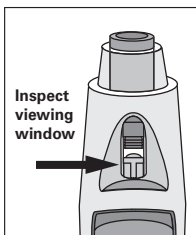
You will hear a loud click—don't be alarmed. This click indicates the injection has begun. Do not pull the SmartJect® autoinjector away from your skin. If you pull the SmartJect® autoinjector away from the skin, you might not get your full dose of medicine. You may or may not feel a needle prick at this time.

5. Wait for Second Click - Continue to hold the single dose SmartJect® autoinjector firmly against your skin until you hear the second click. This usually takes about 3 to 6 seconds, but may take up to 15 seconds.

The second click means your injection is complete and the needle has pulled back into the SmartJect® autoinjector. Lift the SmartJect® autoinjector from the injection site after the second click.

Note – If you have hearing problems, count for 15 seconds from the time you press the button and then lift the SmartJect® autoinjector from the injection site.

STEP 4: AFTER THE INJECTION



1. Check the viewing window - Make sure that the yellow indicator is visible.

This shows you that the SmartJect® autoinjector has worked properly. If you **do not** see the yellow indicator in the viewing window, call 1-800-JANSSEN (1-800-526-7736) for help.

2. Dispose of the used SmartJect® autoinjector -

Place the used SmartJect® autoinjector into a closable puncture-resistant container. **Do not** throw away your used SmartJect® autoinjector in household trash. **Do not** recycle.

3. Use Cotton Ball or Gauze -

After the injection there may be a small amount of blood or liquid at the injection site, which is normal. You can press a cotton ball or gauze over the injection site for 10 seconds. **Do not** rub the injection site. You may cover the injection site with a small adhesive bandage, if needed.

For injection assistance, please call SimponiOne® Nursing Support at 877-MY SIMPONI (877-697-4676) or visit the RN Live Link™ at www.SimponiOne.com.

Please read the Medication Guide, and discuss any questions you may have with your doctor.

